

## PrintWhere®

### Secure remote print for Windows tablets, laptops and desktops

PrintWhere is a Windows®-based print subsystem that enables secure print from any Windows application using Windows Surface tablets, desktops or laptops. PrintWhere eliminates tedious printer configuration and empowers users to discover and print to printers anywhere in the world using one simple interface whether in the office, at the airport or a hotel business center.

PrintWhere is included as a key solution component of each PrinterOn Edition: Enterprise, Express and Hosted, and helps to deliver true secure print, tracking and management for Windows-based workflows.

#### Added features for an even more powerful solution

The latest version of PrintWhere now includes support for on premise deployments, automated deployment options for corporate and Citrix® workstations, local on premise desktop print reporting and LDAP/AD authentication.

#### Benefits for IT

- Eliminates driver management and printer configuration on individual workstations
- Secure SSL/TLS and encryption print data
- Print data compression reduces bandwidth
- Enforce output options - color, duplex, page limits
- Automate workplace deployments
- Works with your Active Directory or LDAP user groups
- Centralized authentication services eliminates LDAP/AD exposure

#### Benefits for Users

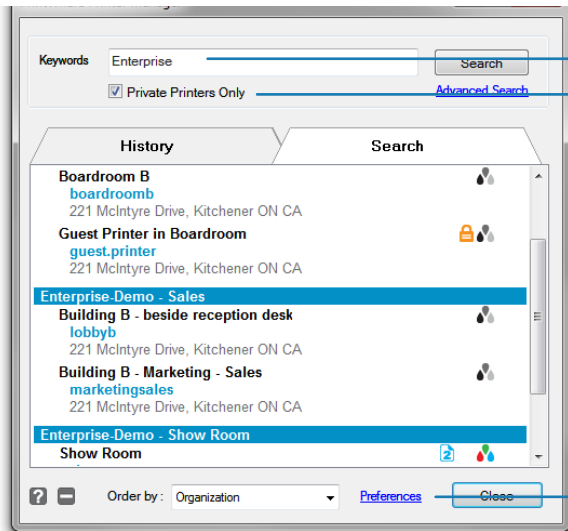
- Discover and print to all authorized corporate devices as well as public print locations
- Printer search via keyword
- Same familiar printing process, File>Print
- No printer configuration
- User interface is the same for all printers



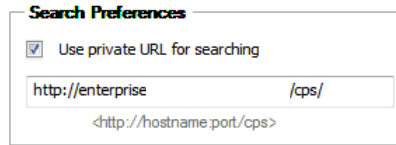
#### Why PrintWhere for your organization?

- Standard File>Print workflow provides consistency to users
- Supports corporate or Citrix workstation configuration
- Print from any Windows application
- Securely print inside or outside the trusted network
- Search for and print to private printers when in the office or public printers when traveling
- LDAP/AD authentication and support for role-based access control
- Desktop print reporting
- Automation of workplace deployments

## Corporate Printer Search



- **Keyword Search** - enter company name, printer name
- **Private Printers Only** - displays only the printers you have permission to print to in the organization (requires private URL)

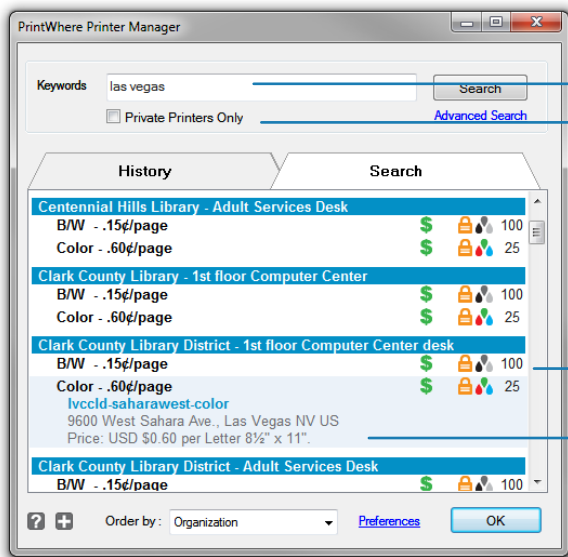


**Search Preferences** - enter the private URL to only display printers within your organization



**Account Settings** - each document submitted will be authenticated against the Login and Username

## Public Printer Search



- **Keyword Search** - enter city, state or location name
- **Advanced Search** - search by printer features such as paper size, duplexing or color

• **Printer Features** - pay for print, secure release, color or BW, duplex, max pages per job

• **Printer Details** - name, location, cost per print and paper size



PrinterOn PrintWhere is Citrix Ready Certified so you can be sure that the solution has been through rigid testing for compatibility with your Citrix environment.

### PrintWhere is compatible with:

- Tablets running the Windows OS<sup>1</sup>
- Windows laptops and PCs running Windows 7 and later<sup>2</sup>
- Windows Server 2008, 2008 R2, 2012 R2<sup>3</sup>
- PrintWhere is Citrix Ready Certified

<sup>1</sup> Excluding Windows Surface RT <sup>2</sup> 64-bit support only <sup>3</sup> 64-bit support for 2008 and later, no 2003 support