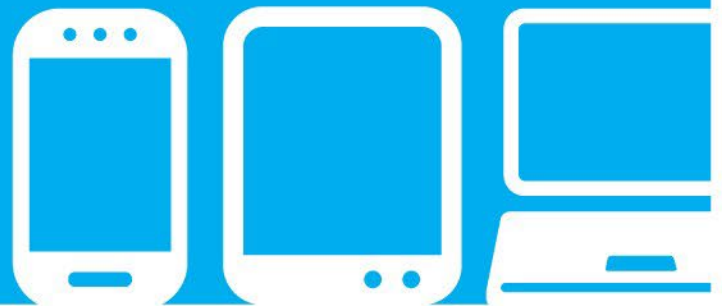


PrinterOn Enterprise

Installation Guide

Version 5.0.1



Contents

Chapter 1: Introduction	4
PrinterOn editions	4
Getting started.....	5
The PrinterOn solution.....	5
Architecture overview.....	6
Chapter 2: Preparing for your installation	8
Managing your PrinterOn license file	8
Retrieving your license file	9
Changing the terms of your license file	9
System requirements.....	9
System account requirements	10
Hardware requirements.....	10
Software requirements	10
Network communication requirements	13
Upgrade limitations	13
PrinterOn installation prerequisites checklist.....	14
Chapter 3: Installing PrinterOn	15
Installing the PrinterOn software.....	15
Custom installation security notes	17
Chapter 4: Configuring your first printer	19
Before you begin.....	19
Logging into the Configuration Manager for the first time	19
Locating your APISiteAuth value	20
Configuring the output destination for a PrinterOn printer.....	21
Chapter 5: Printing using the Web Print portal	24
Printing with the default Web Print UI	24
Confirming the Web Print output.....	26

Chapter 6: Printing using the PrinterOn Mobile App28

Setting up the local server address.....28

Downloading the PrinterOn Mobile App.....29

Configuring the PrinterOn Mobile App.....30

Print from the PrinterOn Mobile App31

Appendix A: Installing PrinterOn components from the command line.....33

1

Introduction

This guide explains how to install and configure the PrinterOn® Enterprise

The PrinterOn solution allows your users to print without installing drivers and without a difficult setup or complicated configuration. Once your PrinterOn software is installed and configured, users can submit print jobs to PrinterOn connected printers in a variety of ways, including:

- the PrinterOn Web Print portal
- the PrinterOn Mobile App
- by email
- through Google Cloud Print
- through native Windows print queues, native iOS, or native IPP

Release Notes PSIM v5.0.1

Release Date:

2022-10-24

Versions:

Server Version - 5.0.1.4195

Central Print Services Version - 5.0.1.2633

PrintAnywhere Version - 7.0.1.2140

PrintWhere Version - 7.0.1.2283

Print Delivery Gateway Version - 5.0.1.2686

Print Delivery Station Version - 5.0.1.2926

Java Version - 16.0.1

Features:

N/A

Bug Fixes:

PDS/PDH API fix for the number of copies being returned in the response.

PDS/PDH fix for the time sorting when selecting a document for release.

Getting started

To get up and running with the PrinterOn solution, you'll need to complete the following tasks:

1. [Prepare your system](#) for the PrinterOn software. To prepare for the PrinterOn installation, you must:
 - Create your PrinterOn account and obtain your PrinterOn license.
 - Ensure your server meets the necessary hardware and software requirements.
2. [Install the PrinterOn software](#).
3. [Configure a PrinterOn printer](#).
4. Configure a print submission workflow and print a document. This guide illustrates how to:
 - [Print using the Web Print portal](#).
 - [Print using the PrinterOn Mobile App](#).

The PrinterOn solution

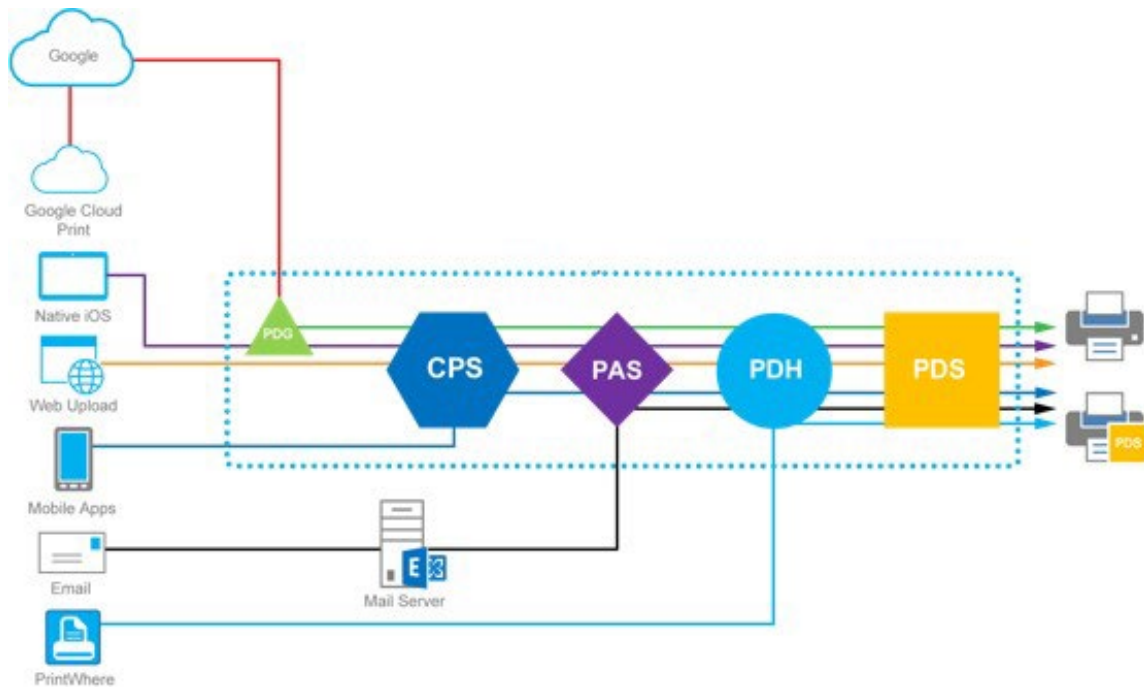
The PrinterOn server software consists of several components that work together to enable web-based printing from PCs and laptops with Internet access. The PrinterOn installation installs the following components:

- **PrinterOn Configuration Manager:** Provides a single centralized management console for all software components, servers and options.
- **PrinterOn Central Print Services (CPS):** Includes the CPS web printing pages, which you host on your network to allow uploading of documents to the service, and the CPS Administration Console.
- **PrinterOn PrintAnywhere® server (PAS):** Provides document processing and rendering.
- **PrinterOn Print Delivery Station (PDS):** Collects print jobs and provides privacy release capability.
- **PrinterOn Print Delivery Gateway (PDG):** Provides support for printing from a variety of devices and systems including iOS, Google Cloud Print compatible applications or traditional print queues.

The PrinterOn solution can be configured for several popular system integration models or customized as needed using the available HTML and Java source code. It is easy to deploy and can be hosted in multiple local or remote network scenarios. The PrinterOn software has been designed for optional integration with existing network infrastructures, including LDAP and Print Management Systems.

Architecture overview

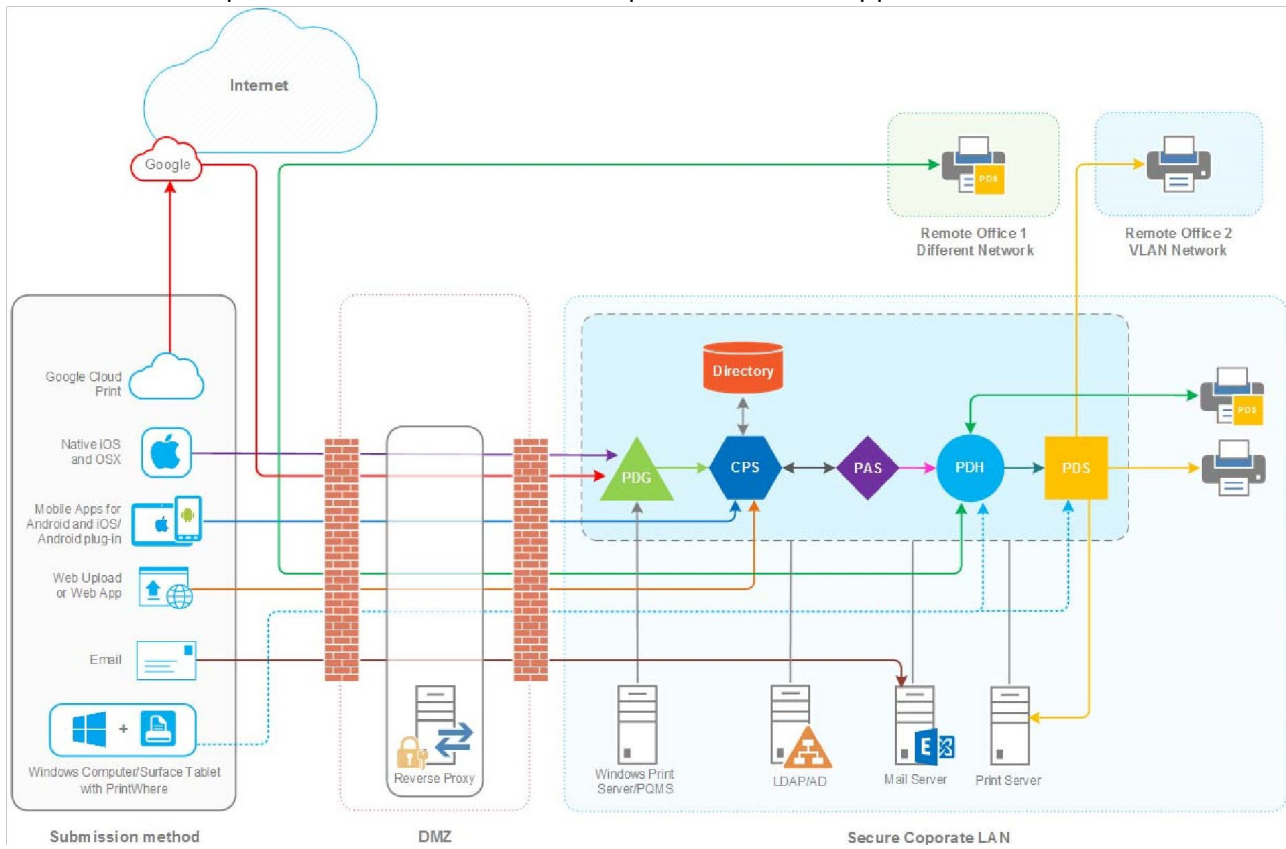
Simplified PrinterOn architecture



Note: The Print Delivery Hub (PDH) component is only available in PrinterOn Enterprise. It manages the delivery of print jobs to multiple PDS components across disparate networks. It is not available with PrinterOn Express.

Detailed PrinterOn architecture with communication ports

The following diagram illustrates a distributed PrinterOn Enterprise deployment. In PrinterOn Express, all components must be installed on a single server, and multiple networks and the PDH component are not supported.



2

Preparing for your installation

This chapter is designed to provide you with all the information you need before you start your PrinterOn installation. You should take the time to familiarize yourself with the contents of this chapter prior to starting the installation and setup of your PrinterOn software. Please review all of the system requirements, recommended applications to install, and other installation requirements.

Managing your PrinterOn license file

When you purchase the PrinterOn service, you receive a license file from PrinterOn. This license file determines what features of the PrinterOn service you can access.

Your license has a specified expiry date; you must extend your license before this expiry date to ensure uninterrupted service. Once the license expires, you'll have no access to the PrinterOn service until it is renewed.

You should keep this license file in a location that is accessible to the computer where you install the PrinterOn software; the software will need to access it later.

Retrieving your license file

Should you misplace or accidentally delete your license file, you can email yourself a copy at anytime by visiting www.printeron.com/administrators.

To retrieve your PrinterOn license:

1. Go to www.printeron.com/administrators.
2. Log in to your PrinterOn Administrator account.
3. On the PrintSpot Management page, click **Manage License**.
4. In the **License information** section of the page, click **Email my license file now**.

Changing the terms of your license file

Should you change the terms of your license—for example, if you change from a Trial version to a licensed version of the PrinterOn service, add additional printers, or extend the term of your existing license—you must update your license in the Configuration Manager before the changes take effect.

Note: You MUST update your license before the term of the license expires to continue operation. The server will stop operation after the license expires.

For information about updating your license, see the PrinterOn Configuration Guide.

System requirements

Before installing and configuring PrinterOn, you should ensure that you have met the following requirements:

- [System account requirements](#)
- [Hardware requirements](#)
- [Software requirements](#)
- [Network communication requirements](#)

System account requirements

You must have **Local Administrator** access on the computer that will run the PrinterOn software. You should create a dedicated account for PrinterOn. The administrator account must have a password (a blank password is not allowed).

Hardware requirements

PrinterOn has the following hardware requirements:

- A dedicated physical server or virtual machine
- Intel compatible processor with 2GHz multi-core processor (quad-core recommended)
- 4 GB RAM minimum for dedicated servers (8 GB recommended)
- 10 GB of disk space for PrinterOn software and third-party applications (20 GB recommended)

Software requirements

PrinterOn has a number of software requirements, recommendations, and limitations. You should be aware of these requirements before installing the PrinterOn software:

- [Required software](#)
- [Recommended software](#)
- [Software that should be removed or disabled](#)
- [SQL Server installation requirements and issues](#)

Required software

PrinterOn requires the following software:

Software	Requirement
Windows Server	<p>PrinterOn supports the following:</p> <ul style="list-style-type: none"> Windows Server 2012 including 2012 R2 with current patches installed (Datacenter and Standard Editions) Windows Server 2016 (Datacenter and Standard Editions) Windows Server 2019 (Datacenter and Standard Editions)
Internet Explorer	Internet Explorer 10 or later with latest patches.
SSL Certificates	PrinterOn recommends as best practice that you deploy digitally signed SSL Certificates from a recognized certificate authority.

Recommended software

Where possible, PrinterOn uses native applications for rendering. For the greatest quality output, you should ensure that the native applications for the documents being printed are installed on the same machine as your PrinterOn software.

For example, printing Microsoft Office documents with LibreOffice will not provide the same output quality.

Software	Requirement
Microsoft Office	<p>Microsoft Office 2010 to Microsoft Office 2019/ Microsoft Office 365 (Office 2016 or later recommended), including Word, Excel, PowerPoint, and Visio.</p> <p>If you are integrating PrinterOn with Microsoft Exchange, installing Microsoft Outlook is also recommended.</p> <p>Note: You should start each application included with Office at least once to ensure that they are properly installed and fully functional.</p>

Software	Requirement
OpenOffice/LibreOffice	<p>OpenOffice.org OR LibreOffice 5.0 or later (32-bit only) recommended.</p> <p>Only one of OpenOffice or LibreOffice should be installed at one time.</p> <p>Note: You should start each application included with OpenOffice/LibreOffice at least once to ensure that they are properly installed and fully functional.</p>

IMPORTANT: Software that should be removed or disabled

The PrinterOn installation includes the following software: Please ensure it is removed before installing PrinterOn Enterprise

- Apache Tomcat
- Microsoft SQL Server Express 2016
- Microsoft .NET Framework 4.5.1 and Microsoft .NET Framework 4 (installed by SQL Server)

Prior to installing PrinterOn, make sure that the following software is either not installed or disabled:

Software	Requirement
Internet Information Services (IIS)	If you have Internet Information Services (IIS) installed on your server, make sure that it is disabled . IIS interferes with the Tomcat installation.
Microsoft SQL Software	Ensure that there are no other instances of SQL Server installed.

SQL Server installation requirements and issues

Beginning with PrinterOn Enterprise 4.2.3, the PrinterOn installation includes a copy of Microsoft SQL Server Express 2016. Previous versions included Microsoft SQL Server Express 2014.

Note: If you are upgrading a previous installation of PrinterOn Enterprise, the installer will not upgrade the SQL Server software. SQL Server Express 2016 is only installed with new installations.

If any issues are found during the installation of the SQL Server, it is recommended that you manually install the Microsoft .NET framework prior to installing the PrinterOn software.

You can also choose to use an alternative database, rather than use the SQL Server Express instance installed with the PrinterOn software. PrinterOn supports the following databases:

Software	Requirement
Microsoft SQL Software	<p>The PrinterOn server supports the following versions of SQL Server:</p> <ul style="list-style-type: none"> • SQL Server 2012, 2014, 2016

Network communication requirements

To ensure that PrinterOn has no network communication issues, make sure that your server meets the following requirements:

Consideration	Requirement
Port	<p>For internal network communication, ensure that the server has inbound and outbound access on port 443.</p> <p>It is recommended, but not required, to have ports 80 and 631 available also.</p>
Network routing permissions	<p>If you intend to set up a Hybrid deployment of PrinterOn, ensure that the DNS and network routing allows PrinterOn to communicate with the following addresses:</p> <ul style="list-style-type: none"> • http://www.printeron.net • https://secure1.printeron.net • https://download1.printeron.net
Consideration	Requirement
Internet access	<p>If you intend to set up a Hybrid deployment of PrinterOn, ensure that Internet access is available at all times.</p>

Upgrade limitations

The PrinterOn installer has the following limitations when upgrading earlier versions of PrinterOn components to the current version:

- **PrinterOn Enterprise:** As of version 4.3.0, PrinterOn Enterprise is now only available in 64-bit. This change has implications when upgrading from earlier versions.

- If you are upgrading from a version earlier than version 4.3.0, please upgrade your software to version 4.3.0 before upgrading to the latest version.
- If you are upgrading from a version earlier than version 2.5.1, please upgrade your software to the latest version of PrinterOn 2.5.1, then upgrade to 4.2.8, before following the upgrade path outlined above.
- **Print Delivery Gateway:** PrinterOn no longer supports upgrading from Print Delivery Gateway v1.3 AB. To upgrade to the newest version of PDG, you must uninstall the PDG, then reinstall it.

PrinterOn installation prerequisites checklist

Before you begin, verify:

- You have your PrinterOn license file in a location that is accessible to the computer where you are installing your server.
- Your computer is running a supported version of the Windows Server software.
- Your Windows User Account is set to log on as local administrator and uses a non-blank password.
- You have logged in as this user prior to starting the installation.
- All Windows Updates have been performed.
- Your computer has Internet Explorer installed.
- Microsoft Office and/or LibreOffice/OpenOffice is installed on this computer, using the same Windows User Account used to install PrinterOn software (see [Recommended software](#)).
- Each application included with Microsoft Office and/or LibreOffice/OpenOffice has been started once to ensure all startup processes are complete.
- IIS (Internet Information Services), if installed, is disabled.
- Microsoft SQL Server is not installed on this computer.
- Port 443 on your server is not currently in use by other services.

3

Installing PrinterOn

Once you have ensured that you have met all the [System requirements](#), and completed the [PrinterOn installation prerequisites checklist](#), you're ready to install your software.

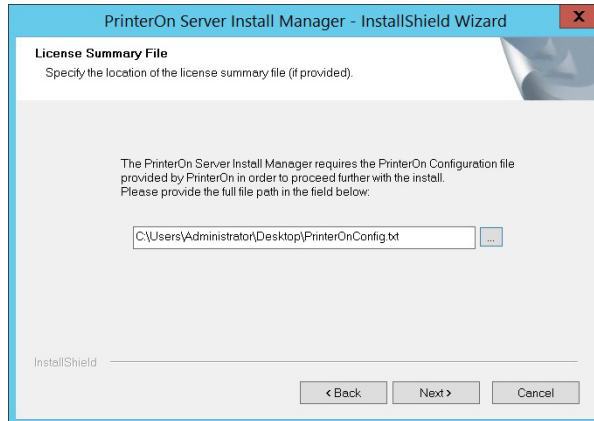
Installing the PrinterOn software

To install the PrinterOn software:

1. Run **PSIM.exe** to launch the PrinterOn Installation Wizard. The wizard guides you through the installation of the PrinterOn software.
2. Click **Next** at the Welcome screen.
3. Accept the License Agreement to proceed with the installation.
4. On the Setup Type screen, choose which type of install you want to perform, then click **Next**.

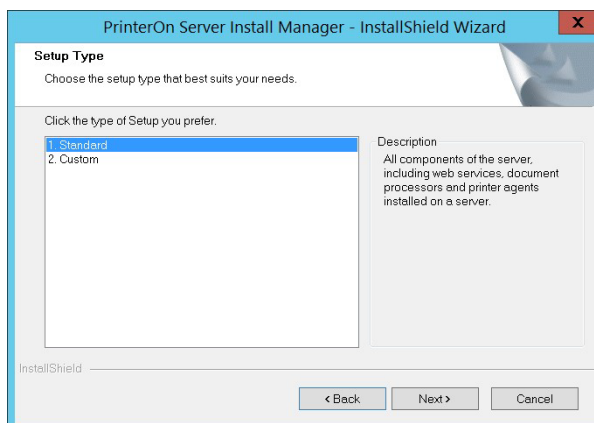
Setup Type	Description
Trial	A free installation of PrinterOn Connect that you can install and use to test the solution's features. The PrinterOn Trial installation does not require your PrinterOn license file, but limits you to three printers and expires after 30 days.
PrinterOn License	The full version of PrinterOn Connect. This installation requires that you supply your PrinterOn license file. You will have access to all the features outlined in your license file until your license expires.

- If you selected a PrinterOn License installation, on the License Summary File screen, browse to your PrinterOn license file and select it, then click **Next**.

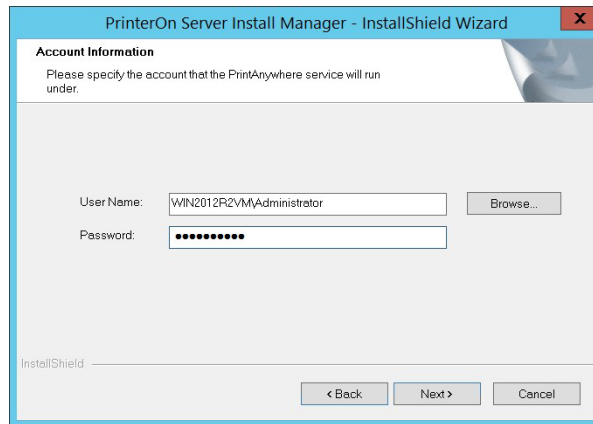


- Choose the Setup type and click **Next**. Unless you want to install the software on a drive other than the C: drive or have some other [special security requirements](#), it is recommended that you choose a **Typical** installation.

Note: If you want to install the software on a drive other than the C: drive, you *must* select a **Custom** installation type. Note that all components must be installed on the same drive.



- In the Account Information screen, enter the local administrator's account information. This is the account under which Windows services such as PrintAnywhere will run.



8. Click **Next** to install PrinterOn.
9. When the installation is complete, click **Finish**, and then reboot the computer.

Custom installation security notes

If you choose a Custom installation type, you'll be prompted to specify whether you apply user-level permissions to the installation folders. Typically, you should *not* enable this setting.

When enabled, this installer modifies the Windows folder permissions for each of the PrinterOn installation folders. Only the administrator account specified during installation will have read/write access to these folders.

Only enable this setting if your organization intends to have a single administration account for the PrinterOn software.

Once enabled, this setting has several security implications:

- Only the specified account can access the files. No other user will have access.
- The same user account specified during installation *must* be used to run the service.
- The same user account specified during installation *must* be used to perform all future upgrades.

Next steps

Now that you have installed your PrinterOn software, you are ready to log in to the Configuration Manager to complete your server configuration and setup.

The following chapters will show you how to:

1. Log in to the Configuration Manager and configure the output destination for a PrinterOn printer definition (that is, map a PrinterOn printer definition to the physical printer).
2. Configure the Mobile workflow and use the PrinterOn Mobile App to print to your mapped PrinterOn printer.

4

Configuring your first printer

This chapter will walk you through:

- [Logging into the Configuration Manager for the first time.](#)
- [Configuring the output destination for a PrinterOn printer.](#)

Before you begin

This chapter will help you to connect a PrinterOn printer definition to a physical printer. Before you start, it will be helpful to have the connection information for your printer available.

Logging into the Configuration Manager for the first time

After you install the PrinterOn software, you'll be able to log in to the Configuration Manager using your default credentials. The Configuration Manager runs in your browser and serves as the central dashboard for your PrinterOn services. From there, you can monitor your system health, administer your printers, and, of course, configure all your PrinterOn settings.

To open the PrinterOn Configuration Manager:

1. Choose **Start > All Programs > PrinterOn > Configure Server.**

Note: If on Windows 2012, search for Configuration Manager from the **Start** menu, or go to http://<machine_address>:8057.

The Configuration Manager Log In dialog appears.

2. In the **Username** field, enter `root`.
3. In the **Password** field, enter one of the following values:
 - For a trial installation, enter **Trial**.
 - For a licensed installation, enter the `APIsiteAuth` value found in your PrinterOn license file. For help locating this value, see [Locating your APIsiteAuth value](#).
4. Click **Submit**. After logging in with your default password, the Configuration Manager immediately prompts you to change your password.
5. Enter your default password, then enter and confirm a new password. Your new password must meet the following criteria:
 - It must not contain your Username.
 - It must not have 4 or more consecutive letters or digits.
 - It must be at least 8 characters in length, with at least 1 letter, 1 number, and 1 special character. Passwords of 10 or more characters must have at least 2 letters, 2 numbers and/or 2 special characters.
6. Click **Login**.

Locating your APIsiteAuth value

When you first install a licensed version of the PrinterOn software, your Configuration Manager uses your `APIsiteAuth` value as your password. The `APIsiteAuth` value is an entry in the PrinterOn license file, unique to every organization that receives a license from PrinterOn.

To locate your `APIsiteAuth` value:

1. Locate your PrinterOn license file (`PrinterOnConfig.txt`) and open it in a text editor.
2. In the file, locate the **[Site]** section. This section includes the `APIsiteAuth` value.

```
[site]
APIsiteUID = 562873393017
APIsiteAuth = SzNQJxV7
AdminEmail = email@printeron.com
```

Configuring the output destination for a PrinterOn printer

Now that you're logged in to the Configuration Manager, you can do some basic configuration so that you can print to a physical printer.

The PrinterOn solution acts as middleware between the user and a physical printer. Essentially, it links a PrinterOn printer definition (which the user selects as their target printer) with a physical printer or print queue, referred to as an output destination (which prints the document).

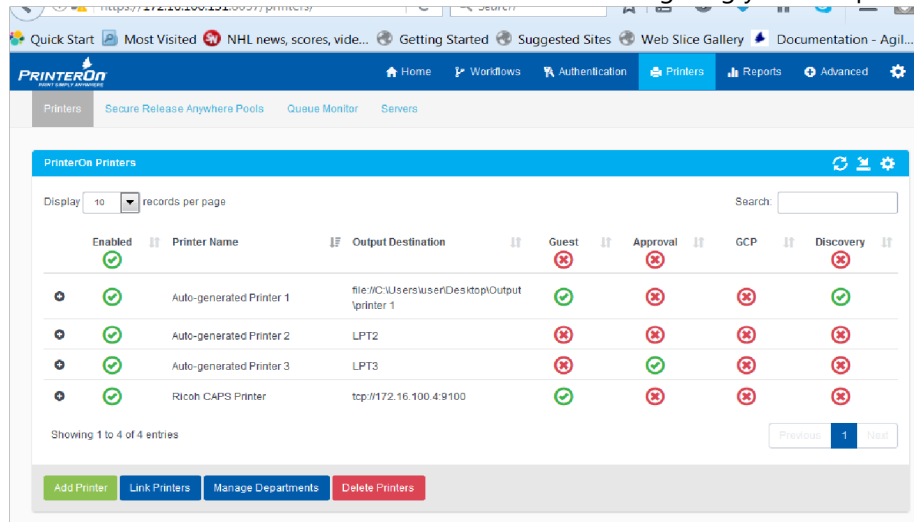
You can configure the printer definition to point to any physical printer, provided you have the connection information—and the permission—to access it.

When you first install PrinterOn, by default, the installer creates several default PrinterOn printer definitions. However, these definitions do not point to a physical printer; they simply map to a default printer port (for example, LPT1). Before you can print, you need to map a printer definition to its output destination.

At this point, setting the output destination is the only configuration you need to perform. You can define other properties for the printer, such as the name displayed to users, the printer location information, and printer capabilities, at a later time. For more information, refer to the PrinterOn Configuration Guide.

To set the output destination for a PrinterOn printer:

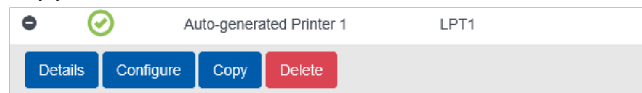
1. In the PrinterOn Configuration Manager, click **Printers**. The list of PrinterOn Printers appears.



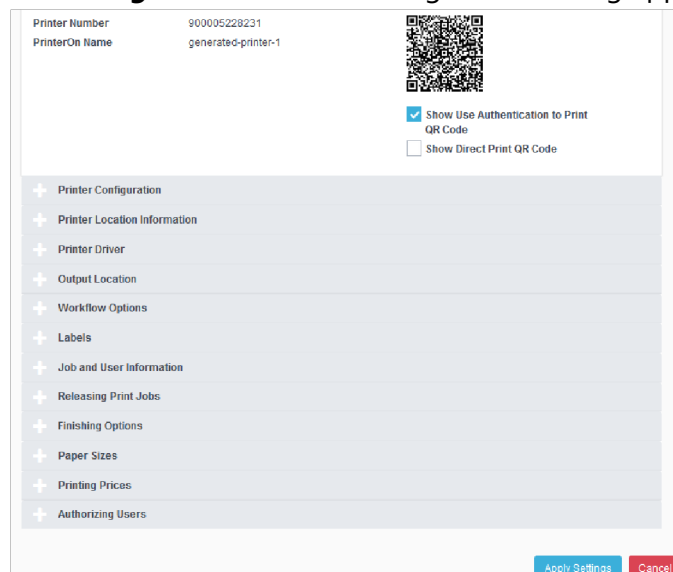
When you launch the Configuration Manager for the first time, the Printers list contains a list of default printer definitions. **Printer Name** is the name used to identify the printer in the PrinterOn Directory, and is the name users see when they choose a printer.

For a thorough description of the information in the Printers list, refer to the PrinterOn Configuration Guide.

- In the **Printers** list, click  next to **Auto-generated Printer 1**. The printer actions appear.



- Click **Configure**. The Printer Configuration dialog appears.



4. Expand the Output Location panel.

Note the **Output Destination** field. This field lets you define the address of the physical printer associated with this PrinterOn printer definition.

5. In the **Output Destination** field, specify the Output Destination value:
 - a) Select a scheme from the drop-down.
 - b) Manually enter the printer name or address in the field.

The value you set here depends on how you access your printers in your organization. The following table outlines a few common ways you might set the output destination. For a complete list, refer to the PrinterOn Configuration Guide.

If your printer...	Then use this scheme:	And define the destination as follows:	Examples
Connects directly to this computer	local://	Enter the printer name in the text field.	local://Samsung X3186 local://HP LaserJet 4000 Series
Can be reached directly by its IP address	tcp://	Enter the IP address and optionally, the port.	tcp://172.16.1.1:9100
Supports the IPP protocol	ipp://	Enter the IP address or URI of the printer followed by the printer queue.	ipp://172.16.1.1/ipp/port1

6. Click **Apply Settings**.

You have now associated a physical printer with the printer definition. Next, you can confirm that you can successfully print to the printer.

5

Printing using the Web Print portal

The simplest way to test your printer connection is to print using the Web Print portal.

The built-in Web Print portal lets users submit print jobs using any web browser. Users navigate to the Web Print portal (created during the PrinterOn installation), upload their documents, then choose the destination printer.

Printing from the Web Print portal is the easiest way to print out of the box; by default, when you install PrinterOn, the Web Print workflow is enabled and ready to use without any configuration.

With PrinterOn Enterprise 4.3.5, a new Web Print portal UI was introduced. This new portal provides greater flexibility for users, allowing them to print multiple documents with a single request. However, because this new UI is more resource intensive, administrators must enable it in the Configuration Manager for it to be presented to users. By default, the portal displays the original Web Print Portal.

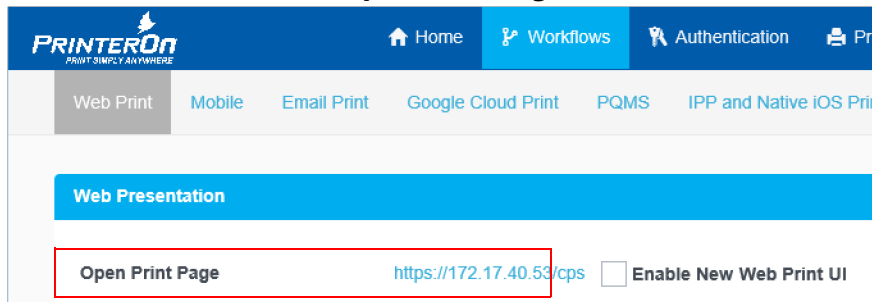
This chapter describes how to use the default (original) UI.

For information on enabling and using the new Web Print UI, see Appendix D: Enabling and Using the Web Print UI in the *PrinterOn Enterprise Configuration Guide*.

Printing with the default Web Print UI

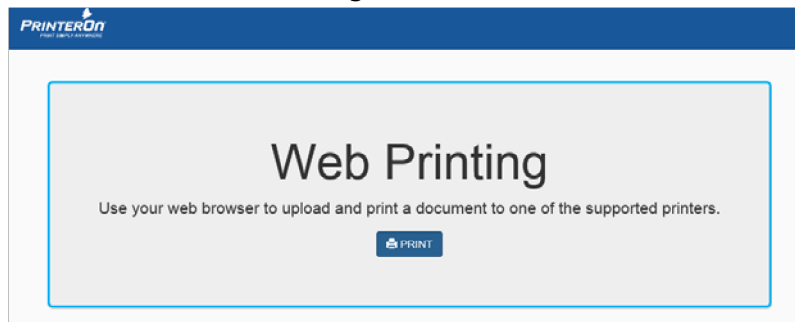
To print with the original Web Print UI:

1. Launch the Web Print portal using one of the following methods:
 - In the Configuration Manager, click **Workflows > Web Print**, then click the link next to **Open Print Page**.

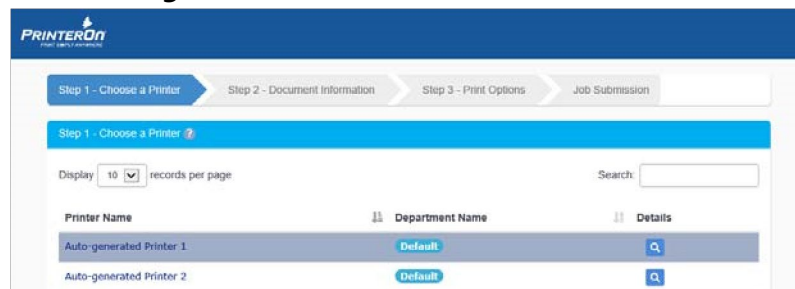


or

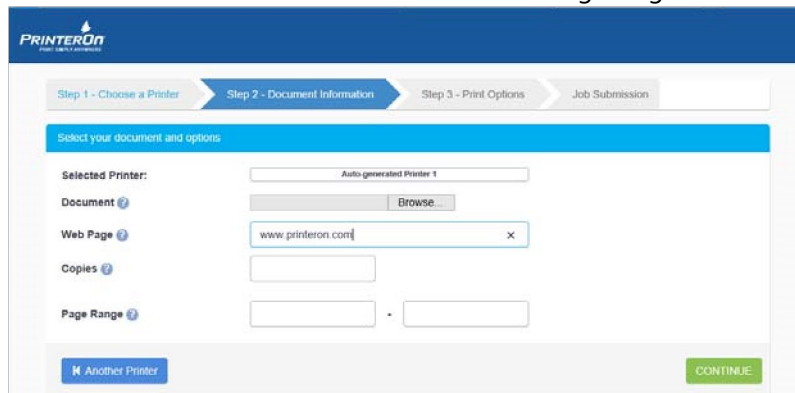
- Choose **Start > All Programs > PrinterOn > Print Now**.
2. On the Web Print Home Page, click **Print**.



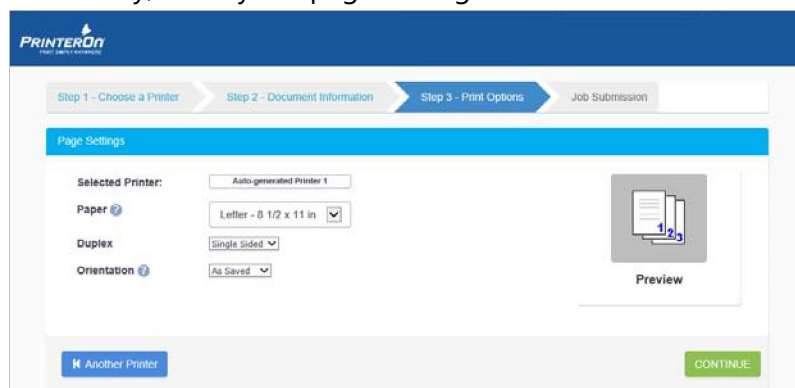
3. Select **Auto-generated Printer 1**.



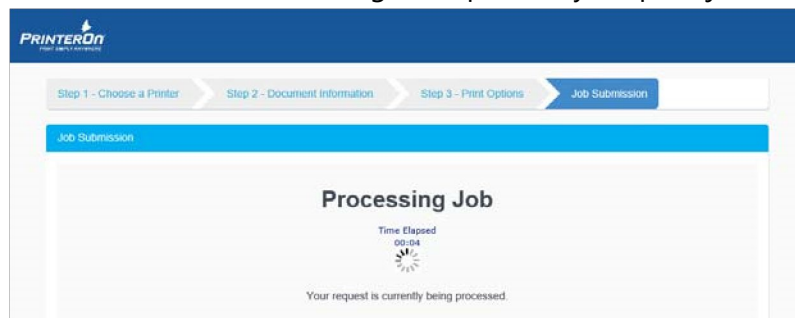
4. Choose the document to print. You can choose to print a document or a web page. For this test, enter a URL to print in the **Web Page** field.



5. Click **Continue**.
6. If necessary, modify the page settings.



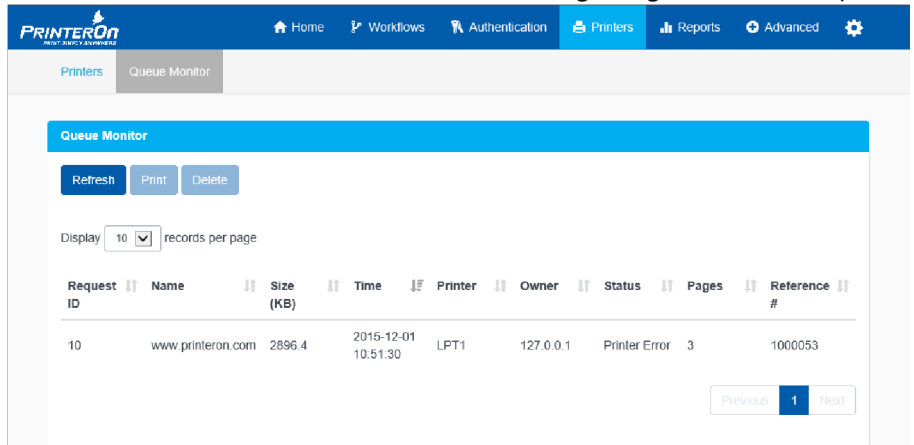
7. Click **Continue**. PrinterOn begins to process your print job.



Confirming the Web Print output

Now that you've sent the print job, you can return to the Configuration Manager and monitor the job status using the Queue Monitor.

1. In the Configuration Manager, select **Printers > Queue Monitor**.



2. Verify that your job was correctly sent to the selected printer.

Next, try setting up the Mobile workflow and using the PrinterOn Mobile App to submit a print job.

6

Printing using the PrinterOn Mobile App

Now that you have confirmed that you have correctly configured the output location for the printer is and can print, you can try printing from one of the PrinterOn Mobile Apps. The PrinterOn Mobile App lets users print directly from their smartphones or tablets.

Note: The PrinterOn Mobile App is available for the following mobile platforms:

- iOS 7 or higher
- Android 4.0 or higher

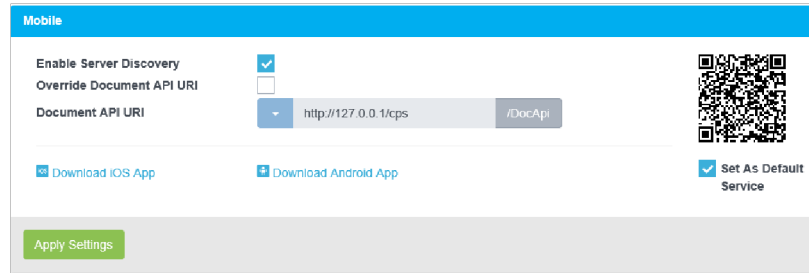
PrinterOn provides out of the box support for Mobile App printing, but requires some configuration of the Mobile workflow to ensure that it is operational. The following sections will help you to quickly get up and running with the PrinterOn Mobile Apps.

Setting up the local server address

The only step needed to complete the Mobile workflow configuration is to set the IP address that the Mobile Apps use to communicate with your PrinterOn installation. Once this address is configured, Mobile Apps will be able to both search for printers and independently submit print jobs.

To set the IP address:

1. In the Configuration Manager, select **Workflows > Mobile**. The Mobile tab appears.



2. Check **Override Document API URI**.
The Document API URI is the URL that the app uses to submit documents to the server.
3. Click the **Document API URI** drop-down and select the address provided. This address is determined automatically by the software based on your server's IP address.
4. Click **Apply Settings**.

With this change, the Mobile workflow is configured. You can now download the PrinterOn Mobile App.

Downloading the PrinterOn Mobile App

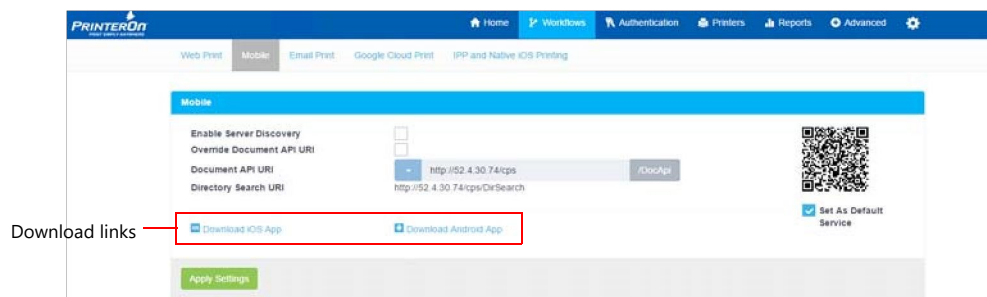
There are two ways you can download the PrinterOn Mobile App onto a device:

- On your device, search your app store for PrinterOn. The PrinterOn Mobile App is identified by the PrinterOn logo.



Select the latest version and download the app.

- Log in to the Configuration Manager from your mobile device, then click **Workflows > Mobile** and click the appropriate link from there:



Configuring the PrinterOn Mobile App

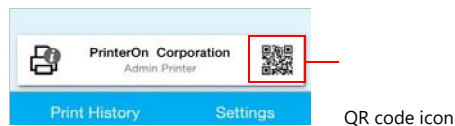
Once you've downloaded and installed the PrinterOn Mobile App on your device, you can configure it to access your PrinterOn installation.

To configure the PrinterOn Mobile App to access your PrinterOn installation:

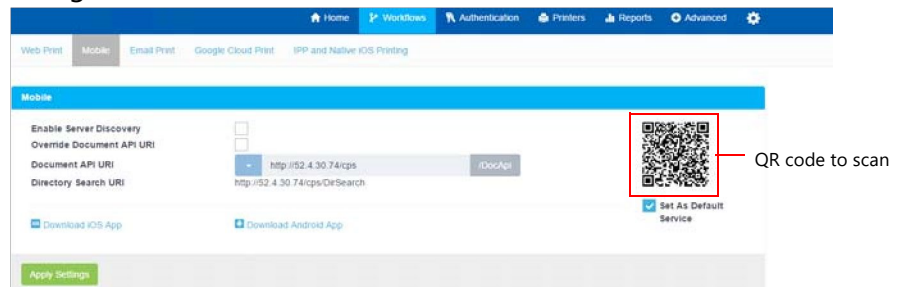
1. On your mobile device, launch the PrinterOn Mobile App.



2. Tap the QR code icon. Scanning a QR code generated by PrinterOn quickly configures the app with printer or server information.



3. In the Configuration Manager, click **Workflows > Mobile**, then scan the QR Code on the Mobile Workflow page with the App. The app is configured with the server information.



4. Confirm the information presented by the Mobile App.

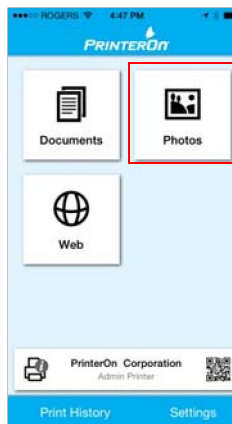
The PrinterOn Mobile App is now configured to communicate with your PrinterOn installation.


Print from the PrinterOn Mobile App

Now we're ready to print from the mobile app. For this test, we'll try printing a photo.

To print from the PrinterOn Mobile App:

1. Launch the PrinterOn Mobile App.
2. Tap **Photos**.



3. Select the photo you want to print.
4. Tap the Printer icon in the top right corner.
5. You will now see a preview of the job when available.
6. To select copies and page range where applicable, tap  in the top right corner.
7. Tap **Print** to submit your job.
8. Tap **Print History** to view the progress of your print jobs.

Next steps

Now that you have installed the software, completed some basic configuration and tested your solution, you can return to the Configuration Manager and complete the configuration of your PrinterOn solution. From the Configuration Manager, you can:

- Complete the configuration of your first printer.
- Define additional printers.
- Configure additional printing workflows, such as Google Cloud Print and native IPP printing.

- Configure printer access control rules and guest printing to control who can print.
- Monitor print jobs and the performance of your PrinterOn solution components.

For complete details about using the Configuration Manager to configure your PrinterOn solution, see the PrinterOn Configuration Guide, which you can find at the [PrinterOn Documentation portal](#).

A

Installing PrinterOn components from the command line

In addition to using the standard UI to install the software, you can also run the installation directly from the command line. Once you enter the command, no further input is required to complete the installation.

Command line installation is useful when installing one or more PrinterOn components, such as a PDS or PDH, on a remote server in a distributed deployment.

To install the software from the command line:

1. On the command line, navigate to the folder containing the PrinterOn installation file (psim.exe).
2. Type the following command:

```
psim.exe "Mode:Auto|InstalType:Install|
ConfigFile:C:\PrinterOnConfig.txt|
UserName:WINEIFB69833B\Administrator|Password:password
| PASKey:ABCD-EFGH-IJKL|PDSKey:MNOP-QRST-UVWX|
PDHKey:SDAS-XXFD-RFDE|
Features:PrintAnywhere,PDS,PDH,PDG,CPS,Sql Server"
```

Options and their values are colon-separated. Option/value pairs are separated by a pipe symbol. The entire list of options must be enclosed in quotation marks.

A full description of each option is described in the table below:

Option	Description	Example
Mode	<p>Required. The mode of the installer. This option only supports one value:</p> <ul style="list-style-type: none"> • <code>Auto</code>: Automates the install so it doesn't prompt the user for information. 	<code>Mode:Auto</code>
InstallType	<p>The type of install you want to perform. This option supports the following values:</p> <ul style="list-style-type: none"> • <code>Install</code>: Installs the specified component(s) on the server. • <code>Uninstall</code>: Removes all PrinterOn components from the server. <p>If this option is omitted, a regular installation is performed.</p>	<code>InstallType:Install</code>
ConfigFile	<p>Required. The location of the license file (<code>PrinterOnConfig.txt</code>) used to install PSIM. You must specify the full path to the license file.</p>	<code>ConfigFile:C:\PrinterOnConfig.txt</code>
UserName	<p>Required. The username of the local administrator installing the software.</p>	<code>UserName:WINEIFB69833B\Administrator</code>
Password	<p>Required. Password of the local administrator installing the software.</p> <p>Note: Make sure that the password you are supplying is correct. The installer will complete the installation even if the wrong password is supplied, but installed components will not work as expected.</p>	<code>Password:password</code>
PASKey	<p>Optional. The serial key for the PrintAnywhere Server that you are installing. If you don't supply a value, the installer installs the PAS software but does not link it to an existing PAS instance.</p>	<code>PASKey:ABCD-EFGH-IJKL</code>
PDSKey	<p>Optional. The serial key for the Print Delivery Station that you are installing. If you don't supply a value, the installer installs the PDS software but does not link it to an existing PDS instance.</p>	<code>PDSKey:MNOP-QRST-UVWX</code>

Option	Description	Example
PDHKey	Optional. The serial key for the Print Delivery Hub that you are installing. If you don't supply a value, the installer installs the PDH software but does not link it to an existing PDH instance.	PDHKey:SDAS-XXFD-RFDE
Features	Optional. A comma-separated list of PrinterOn components that you want to install.	Features:PrintAnywhere,PDS,PDH,PDG,CPS,Sql Server

Trademarks and service marks

The following are trademarks or registered trademarks of ePRINTit USA, LLC. under License:

PrinterOn®, PrintAnywhere®, Print Simply Anywhere®, PrintWhere®, PRINTSPOTS®, the PrinterOn Logo, the PrinterOn Symbol, PrintConnect™, Secure Release Anywhere™, and PrintValet™ are trademarks and/or registered trademarks of PrinterOn.

The following are trademarks or registered trademarks of other companies:

Windows, Internet Explorer, Microsoft Word, Microsoft Excel, Microsoft PowerPoint, and Microsoft Visio are trademarks or registered trademarks of Microsoft Corporation.

iPad, iPhone, AirPrint, and macOS are trademarks or registered trademarks of Apple.

iOS is a trademark or registered trademark of Cisco in the U.S. and other countries and is used by Apple under license.

Android, Chrome OS, and Chromebook are trademarks or registered trademarks of Google Inc.

BlackBerry is a registered trademark of BlackBerry, Ltd.

Other brands and their products are trademarks or registered trademarks of their respective holders.

Copyright notice

© Copyright 2022 by ePRINTit USA, LLC Licensed owner of PrinterOn products and services All rights reserved. No part of this publication may be reproduced, stored in a retrieval system, or transmitted, in any form or by any means, electronic, mechanical, photocopy, recording, or otherwise, without the prior written permission of PrinterOn Inc.

Disclaimer: ePRINTit makes no warranty with respect to the adequacy of this documentation, programs, or hardware, which it describes for any particular purpose, or with respect to the adequacy to produce any particular result. In no event shall PrinterOn Inc. be held liable for special, direct, indirect, or consequential damages, losses, costs, charges, claims, demands, or claim for lost profits, fees, or expenses of any nature or kind.

Version 5.0.1 | Oct 24, 2022